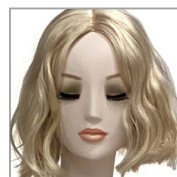




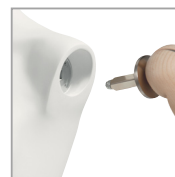
CL abstract head with ears



CM egghead with ears



CL with realistic make-up B3



push and pull



articulated head system



PVC abstract hands (not articulated)



ABFT8 abstract feet with removable high heels

COLLECTION 145 SLEEK VINTAGE

Product Reference Sheet

Mensurations cm / Measurements inches

Poitrine / bust	81 cm	31 $\frac{7}{8}$ "
Taille / waist	61 cm	24"
Hanches / hips	91 cm	35 $\frac{7}{8}$ "
Hauteur / height	188 cm	6'2"
Talon / heel	10 cm	4"



Confection / Clothing EUR

Veste / jacket	XS-S / 34-36
Haut / top	XS-S / 34-36
Pantalon / trousers	XS-S / 34-36
Robe / dress	XS-S / 34-36
Sous-vêtements / underwear	85B / 34-36
Pointure / shoes	37-38

Measurements are based on average size of the mannequins in the collection and some positions may vary in size.

Foot & calf fittings included.
Buttock & back fittings optional.
No leg cut.